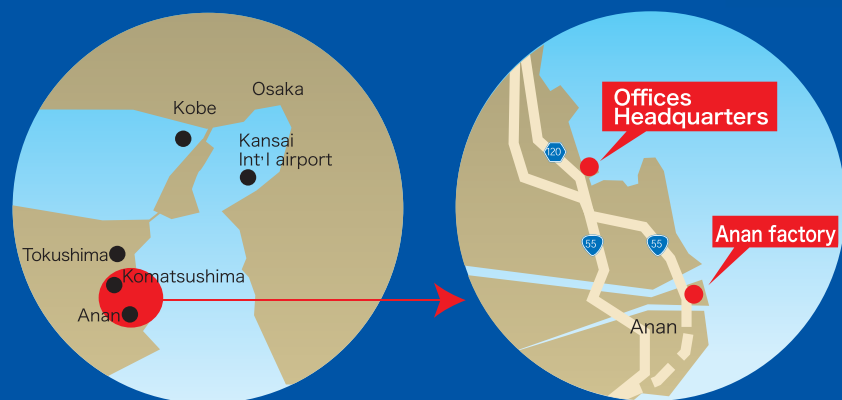


# YAMAMOTO

## CORPORATE PROFILE



### YAMAMOTO ENG.WORKS Co.,LTD

8-90,Kanaiso-cho Komatsushima, Tokushima 773-0007 Japan

TEL.(+81)885-32-1760 FAX.(+81)885-33-0227

<http://www.yg.byf.co.jp>

E-mail:apt-c@poem.ocn.ne.jp

# Making a machine for contributing to human and environment.

This is the theme we're seeking.

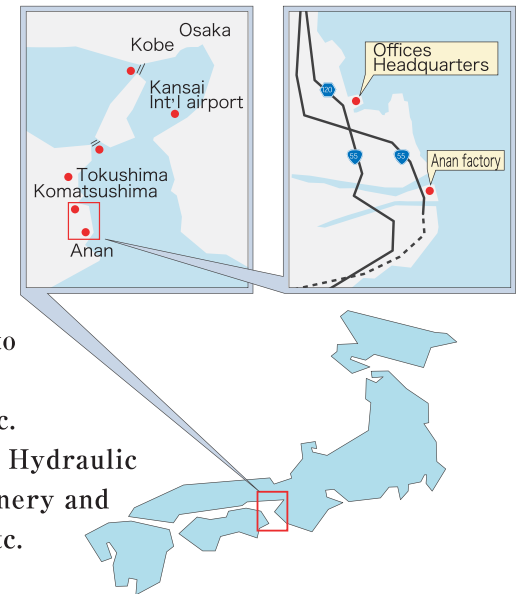
Yamamoto engineering works Co., Ltd. was founded in 1917 as a marine engine manufacturer.

Building upon a wealth of inventiveness and accumulated technological acumen, Yamamoto has been at the forefront in introducing the latest technology throughout its more than 90 year corporate history.



## Company Overview

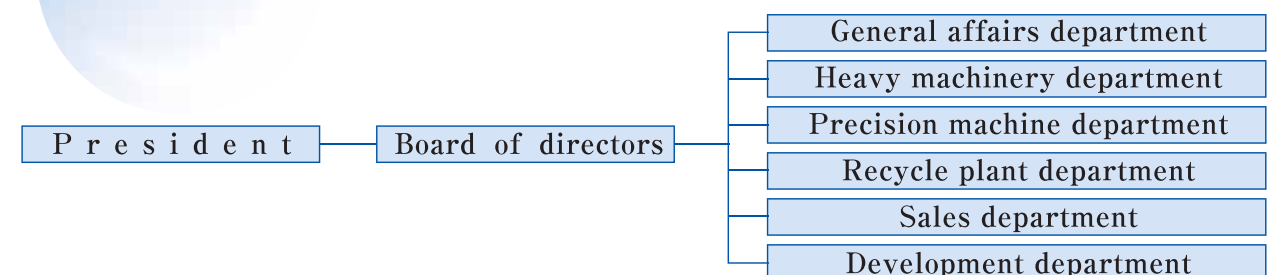
- Founded: 1917
- Incorporated: 1962
- Capital: 70 million
- Executives:
  - Chairman and executive director: Koichi Yamamoto
  - President and representative director: Tomoaki Yamamoto
- Employees: 178
- Affiliated banks: Awa Bank, Kochi Bank, Shoko Chukin etc.
- Description of business: Design, Manufacture and sale for Hydraulic press machine, Automated machinery and Plastic waste recycling system etc.
- Construction business license:
  - Tokushima Governor licensed No. 7572, Machinery installation, piping works, civil engineering, steel structure construction works, painting, electrical works



Headquarter



Anan factory



- Office
  - Headquarter: 8-90, Kanaiso-cho Komatsushima, Tokushima 773-0007 Japan
  - Takamatsu office: Nakahama Shido Sanuki, Kagawa 769-2101 Japan
  - Tokyo branch: Tsukuda Chuo-ku, Tokyo 104-0051
  - Osaka branch: 4-6-30-304 Nishinakajima, Yodogawa-ku, Osaka 532-0011 Japan
- Factory
  - Headquarters: 8-90, Kanaiso-cho Komatsushima, Tokushima 773-0007 Japan
  - 8-106, Kanaiso-cho Komatsushima, Tokushima 773-0007 Japan
  - Anan factory: Tatsumi-cho, Anan, Tokushima 774-0001 Japan

# Corporate identity

- 1. Constantly discover the new value and create a demand.
- 2. Reduce the environmental destruction and support an affluent life.
- 3. In the technology and market, we are the company that is open to the world.
- 4. Be grateful and reward a society.



1959 Marine diesel engine



# Company history

- 1916 12 Founded as a private company at Tsukiji, Fukushima (presently Shinminamifukushima). Started the manufacture of marine engines.
- 1937 3 Former president appointed to succeed his father.
- 1944 8 Plant destroyed due to war damage.
- 1947 5 Company re-established at Shinminamifukushima 1-5-1.
- 1953 9 Manufactured first hydraulic press.
- 1954 12 Manufactured first hot press.
- 1956 12 Reorganized as Yamamoto Iron Works Corporation.
- 1962 1 Reorganized and incorporated as Yamamoto Engineering Works Co.,Ltd. with capital ¥4.5 million.
- 1965 2 Manufactured 4' x8' , 2400-ton hot press. Achieved total production output of 100 units.
- 1965 7 Manufactured first molding press.
- 1966 3 Began overseas exports, which have continued ever since.
- 1967 1 Headquarters and factories moved to present location.
- 1967 8 Manufactured fully automated 30-opening hot press.
- 1969 1 Manufactured 4' x8' , 3000-ton molding press.
- 1970 6 Awarded recognition from the Minister of International Trade and Industry for contributing to exports.
- 1970 9 Delivered first plant for particle board manufacturing.
- 1971 8 Manufactured scrap molding press.
- 1972 11 Received "Invention Encouragement Prize" from the Japan Inventors Association.
- 1973 8 Easter Factory completed. Office building completed in December of the year.
- 1980 7 Manufactured hydroshear. Began mass production of scrap processing machines.
- 1980 8 Established Yamamoto Corporation as a sales company, purchased Southern Factory.
- 1981 10 Established business tie-up with Tohoku Homoboard Industrial Co.,Ltd.
- 1983 2 Completed and shipped first APT hot press for plywood.
- 1984 7 Manufactured one of Japan' s largest hot presses for particle board and exported it to former Soviet Union.
- 1986 3 Established Yamamoto Precision Machinery Co.,Ltd. for the manufacture of conveyance machines. And the processing of made-to-order equipment.
- 1986 9 Introduced CAD system.
- 1987 12 Marked company' s 70th anniversary since founding.
- 1989 6 Completed additional facilities for Eastern Factory.
- 1990 8 Established APT Corporation as an overseas sales company.
- 1991 1 Opened Automatic Machinery Business Dept. at Yamamoto Precision machinery Co.,Ltd.
- 1993 4 New factory (total site area 46,757 m2) is completed in Anan Tokushima.
- 1994 4 Entered into the manufacture of electronic components manufacturing machines.
- 1996 2 Established Y-tech Corporation as a development and engineering company for industrial waste disposal plant.
- 1996 7 Granted USA patent for dryer press "Step Dryer" .
- 1997 12 Marked company' s 80th anniversary since founding.
- 1999 5 Dryer press "Step Dryer" won the prize for wood processing technology and Ichikawa Memorial Award.
- 1999 5 Received a first order of Recycle Plaza Plant.
- 2000 3 First adopted as NEDO regional new formation consortium. 4 times adoptions for three consecutive years since.
- 2000 11 Received a first order of Two-directional press.



1923 Plant view of initial operation

- 2001 6 Manufactured Waste plastic compression packing machine.
- 2002 4 Entered into the manufacture of liquid crystal display components manufacturing machines.
- 2002 12 Developed new method for plastic wastes recycling "Plastic Wastes Direct Molding System" .
- 2003 4 Received "Industrial general technology research Shikoku Center Prize" for recent new technology developments.
- 2003 6 Received a first order of large-size steam Injection press.
- 2003 11 Integrated group companies into "Yamamoto Engineering Works Co.,Ltd."
- 2003 11 Received "Invention Encouragement Prize" from the Japan Inventors Association.
- 2007 5 Selected as "Energetic 300 small and medium-sized manufactures for 2007" from Ministry of Economy and Small and Medium Enterprise Agency.
- 2007 12 Marked company' s 90th anniversary since founding.
- 2008 11 Delivered first Servo Press.
- 2012 3 Large recycling plant (load 127 ton/day) completion.

## Main equipments

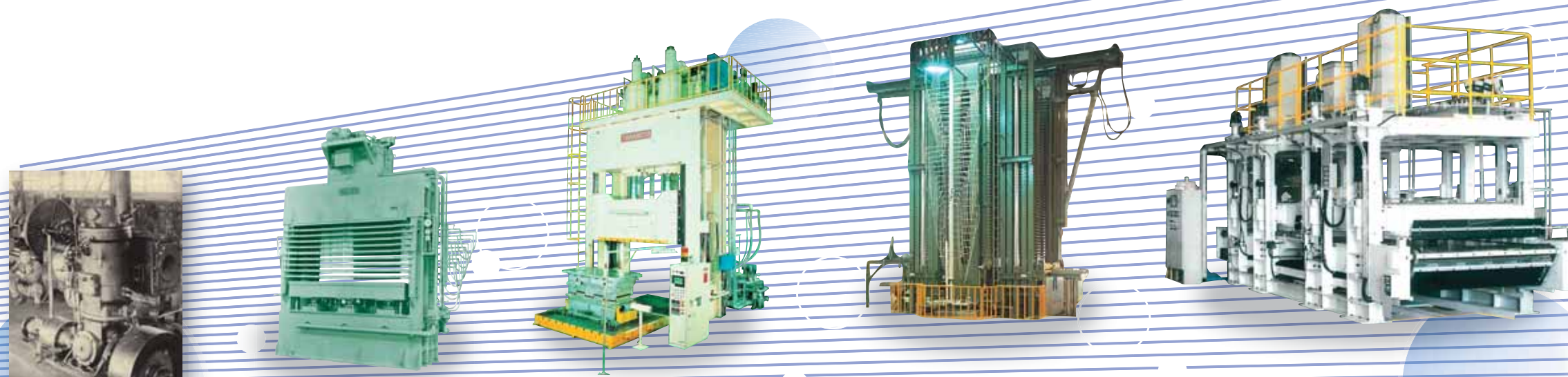
- NC horizontal boring machines BSF-150B type 11.5m×4.0m (1)
- NC horizontal boring machines BSF-130B type 8.5m×3.0m (1)
- CNC horizontal boring machines 3.5m×9.0m (1)
- NC machining center with five-face machining equipment DMC-10M type 8.5m×1.25m (1)
- NC machining center with five-face machining equipment 8.0m×1.5m×2.4m (1)
- NC machining center with five-face machining equipment 6.0m×1.8m×1.7m (1)
- Cylindrical grinding machine φ1.2m×6.0m (1)
- Cylindrical grinding machine φ0.4m×3.0m (1)
- General purpose lathe φ1.1m×7.0m
- NC lathe 1.2m×6.0m (1)
- Complex planer 2.5m×8.5m (1)
- ATC machining center#6 (8)
- CNC boring milling machine (2)
- BTA punching machines 3 axis (1)
- Gun drill (2)
- Automatic welding machine (1)
- Distortion removal press (2)
- Experimental press (6)
- Crane 80t (1)
- Crane 50t (1)
- Crane 30t (3)
- Crane 1t-20t (31)



# YAMAMOTO brand - recognized worldwide as a leader in large scale press machines.



Our products reach the 47 countries around the world.



## Challenge

## Development

## Progress



## YAMAMOTO meet your industrial equipment needs.

Reliable performance of APT hot press for plywood has earned YAMAMOTO Japan's No.1 market share in the field of plywood hot presses. We are confident that our industrial hydraulic machines are unbeatable. YAMAMOTO received overwhelming support from not only domestic customer but also the customer around the world.

## Industry-leading production facilities can meet the most demanding specifications.

YAMAMOTO's talented staff can respond to the most exacting requests, using cutting-edge equipment and facilities to deliver products that perfectly suit the end user's requirements. YAMAMOTO's pride and reputation rest on a proven ability to precisely accommodate a wide variety of customer needs.

# Always seek a new value.

We are developing a new technology, product and field that enable us to create the new market.  
We continue our efforts to commercialize a value that we require more quickly.

## Housing construction related press machines (Building material press machines)



Press for large sectional laminated wood



Hot press for LVL



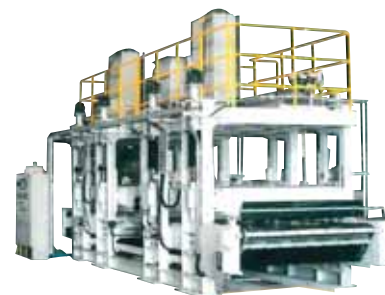
Filter molding press  
(Production of external wall material etc.)



Hot-cold press for laminated sheet



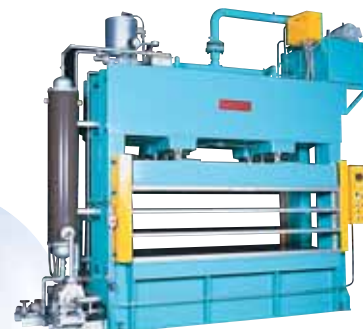
Conveyor press



Servo press  
(Production of a metallic panel, door and partition panel)



FRP molding press  
(Forming of a prefabricated bath etc.)



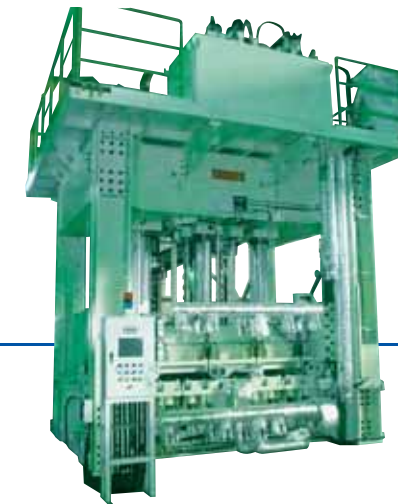
Oil-heated hot press



Press for experimental use  
(Experimental pressing and testing applications)

## Automotive related press machines

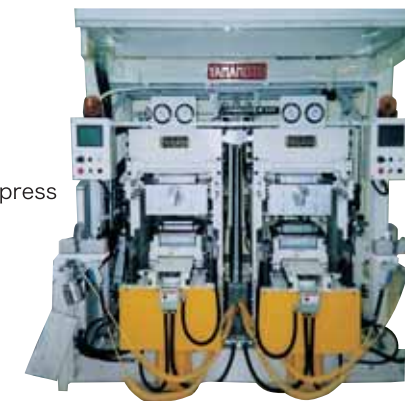
Automotive interior press



Hybrid press (Manufacture of Automotive materials)

## Rubber and Urethane related press machines

Rubber vulcanization press



Heat insulating panel  
manufacturing press line



Trimming press (Manufacture of felt, rubber and similar products)



Urethane foam panel press (Manufacture of auto body panel)



Large size rubber molding press

Heavy machinery department

In addition to planer, large size boring machines and milling machine, we have many large size processing machines and automation equipments so that we can provide the precise and reliable products.

We are also working with machining center with five-face machining equipment, special weld-ing machine for piston, CMC ball grinding machine and grinding of piston.

Generally, we use casting piston and cylinder. However, Yamamoto press machine adopts winding type of welded construction. So there is no crack and we use induction hardening so as not to scratch the surface of it.

Every parts of products are well checked by ultrasonic inspection and color check etc and Yamamoto has a strict quality control regime.

Our press accuracy meets hydraulic press level 1 and 2 of Japanese Industrial Standards (JIS). We have delivered the press machine that the total pressure is up to 6000 ton. We can manufacture various machines according to customer's needs.

Precision machine department

In the precision machine department, we totally provide the design, development, manu-facture and sales for the "Robotization around press machine that manufactured in the heavy machinery department", "Manufacture of precision equipment", "Automatic assembly machine for electronic parts and automotive parts" and its application product.

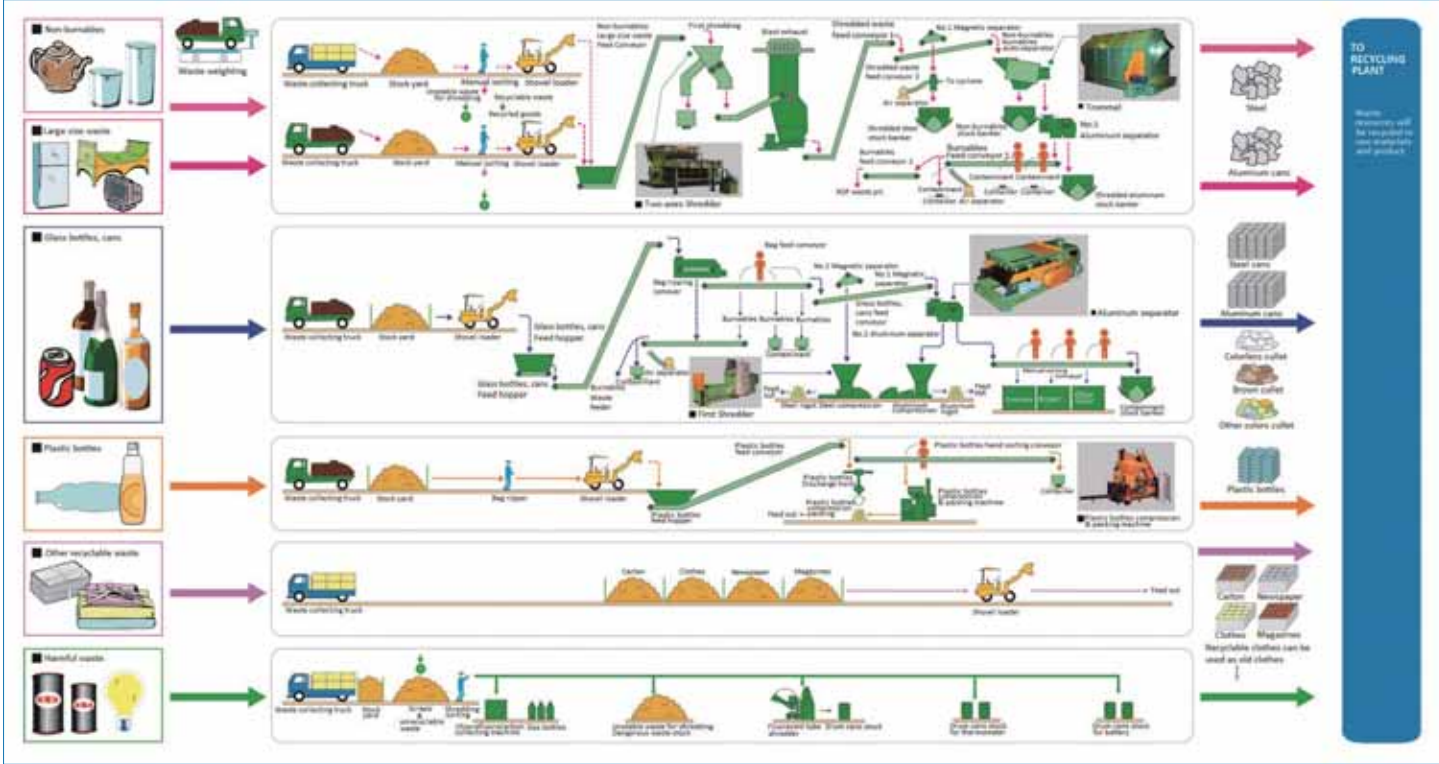
Security & Safety	All processes are assembled by automatic control.
Effectiveness & Power saving	All process are automated so that the amount of production that determined can be assembled and inspected in a short time.
Design development	We have a design and manufacturing structure to respond to a wide variety of needs applying the experience so far.
Inspection	We conduct an inspection in the manufacturing process. After that, we conduct an operating and performance inspection. When all inspection are passed, we deliver our product to customer.
Maintenance	Our products are well designed so that we can finish a mainte-nance work within a limited time.

Recycle plant department

Waste disposal & recycling system

- \*Waste disposal plant combined resources recycling plant.
- \*Sorting, shredding and size-reduction of large-sized disposal and non-burnable waste, to separate recyclable resources.
- \*Providing a coherent system with high reputation of compact plant with high performance.
- \*Yamamoto manufactures main equipments of the plant that ensures stable and efficient operation.
- \*Total supporting system including design, manufacture, installation and maintenance.

Flow chart



Machine and equipment



Construction operation



Recycling plaza appearance

