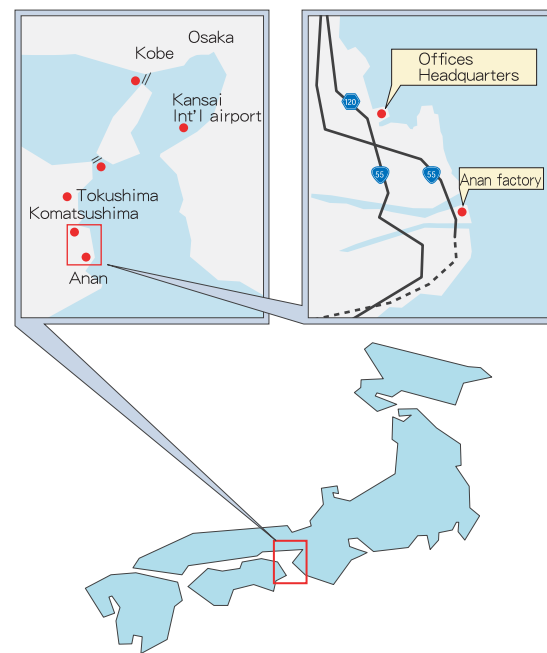


PRODUCT LINEUP

YAMAMOTO ENG.WORKS Co.,LTD

8-90,Kanaiso-cho Komatsushima, Tokushima 773-0007 Japan
TEL.(+81)885-32-1760 FAX.(+81)885-33-0227
<http://www.yg.byf.co.jp>
E-mail:apt-c@poem.ocn.ne.jp



YAMAMOTO



Yamamoto engineering works Co., Ltd. was founded in 1917. With the hydraulic press machines as core, we have met a wide range of needs including industrial press machine, waste disposal machine, large resource recycling plant and precision machine.

We use an integrated manufacturing system from design to manufacture. So we can manufacture various machines matching with the customer's specification. We also provide the maintenance service including electricity.

Our strong point is to make hardly breakable machine. So far, we have exported the various machines in about 47 countries and they are satisfied with our machine.

We introduce only some of our machines in this catalog as we take made-to-order system. If you have any queries, please feel free to contact us.

INDEX

Recycling system	2
Material recycling system	2
Recycling plaza	3
Waste disposal machines	4
Shredders & volume reduction machines	4
Shredders & sorters	6
Industrial press machines	7
Rubber and urethane presses	7
Plastic and laminated board presses.....	8
Building material presses.....	10
Automotive interior molding presses, filter molding presses and powder molding presses	12
Automated machinery	13

COMPANY PROFILE

- Founded: 1917
- Incorporated: 1962
- Capital: 70 million
- Executives:
 - Chairman and executive director: Koichi Yamamoto
 - President and representative director: Tomoaki Yamamoto
- Employees: 178
- Affiliated banks: Awa Bank, Kochi Bank, Shoko Chukin etc.
- Description of business: Design, Manufacture and sale for Hydraulic press machine, Automated machinery and Plastic waste recycling system etc.
- Construction business license:
 - Tokushima Governor licensed No. 7572,
 - Machinery installation, piping works, civil engineering, steel structure construction works, painting, electrical works

■ Main equipments

- NC horizontal boring machines BSF-150B type 11.5m×4.0m (1)
- NC horizontal boring machines BSF-130B type 8.5m×3.0m (1)
- CNC horizontal boring machines 3.5m×9.0m (1)
- NC machining center with five-face machining equipment DMC-10M type 8.5m×1.25m (1)
- NC machining center with five-face machining equipment 8.0m×1.5m×2.4m (1)
- NC machining center with five-face machining equipment 6.0m×1.8m×1.7m (1)
- Cylindrical grinding machine φ1.2m×6.0m (1)
- Cylindrical grinding machine φ0.4m×3.0m (1)
- General purpose latheφ1.1m×7.0m (1)
- NC lathe 1.2m×6.0m (1)
- Complex planer 2.5m×8.5m (1)
- ATC machining center#6 (8)
- CNC boring milling machine (2)
- BTA punching machines 3 axis (1)
- Gun drill (2)
- Automatic welding machine (1)
- Distortion removal press (2)
- Experimental press (6)
- Crane 80t (1)
- Crane 50t (1)
- Crane 30t (3)
- Crane 1t-20t (31)



Headquarter factory
(Komatsushima-shi TOKUSHIMA)
Total site area 17,905m²
Total building area 8,876m²



Anan factory (Anan-shi TOKUSHIMA)
Total site area 46,757m²
Total building area 9,861m²



Waste plastic direct molding system

Use: Molding of plastic pallet, panel & etc.

We offer a complete molding system of combination of melting, injection and low-pressure molding and optimal die design for making high strength and low strain product with minimal thermal damage by difficult-to-recycle plastic wastes.



Waste wood recycling system for large-sized building material

Use: High speed molding of large-sized and thick building material (pillars & wall panels)

After making big wood chips from general wood waste and building wood waste, then applying heat curing adhesive, with heat compression and steam injection, this heating curing and molding system makes extremely thick mat effectively, as heat and pressure reaches the center of mat at short time.

Fiber board system for scrap of cloth and fiber

Use: Forming of lightweight waterproof board and secondary cubic molding board

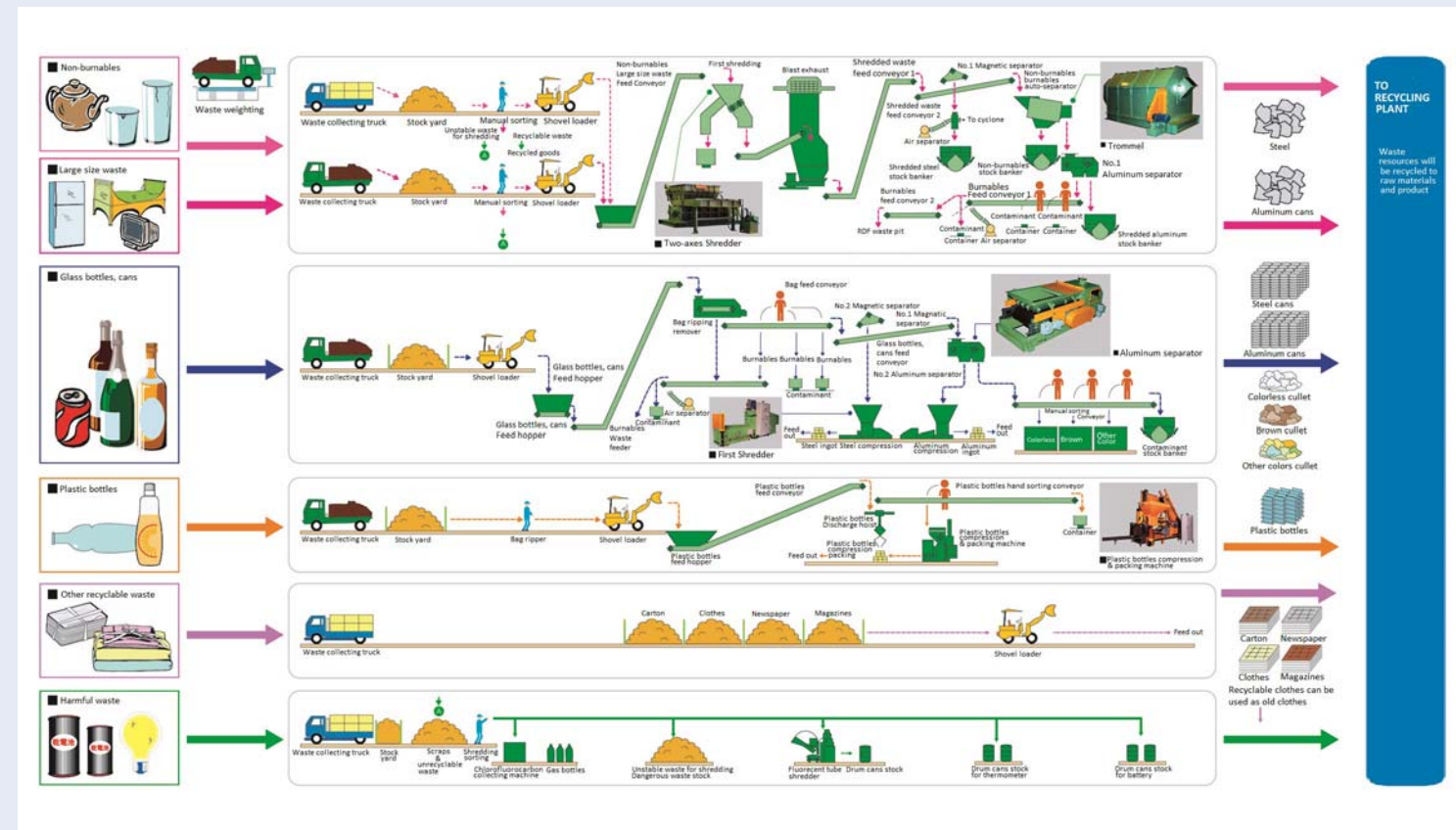
This system is to make a lightweight, high breathability and high weather resistance board with high accuracy. Mix a main material such as scrap of non-woven cloth and melting fiber to make a mat and solidify it by heating, pressing and cold pressing.



Waste disposal & recycling system

- *Waste disposal plant combined resources recycling plant.
- *Sorting, shredding and size-reduction of large-sized disposal and non-burnable waste, to separate recyclable resources.
- *Providing a coherent system with high reputation of compact plant with high performance.
- *Yamamoto manufactures main equipments of the plant that ensures stable and efficient operation.
- *Total supporting system including design, manufacture, installation and maintenance.

● Flow chart



● Machine and Equipment



● Construction Operation



● Recycling Plaza Appearance



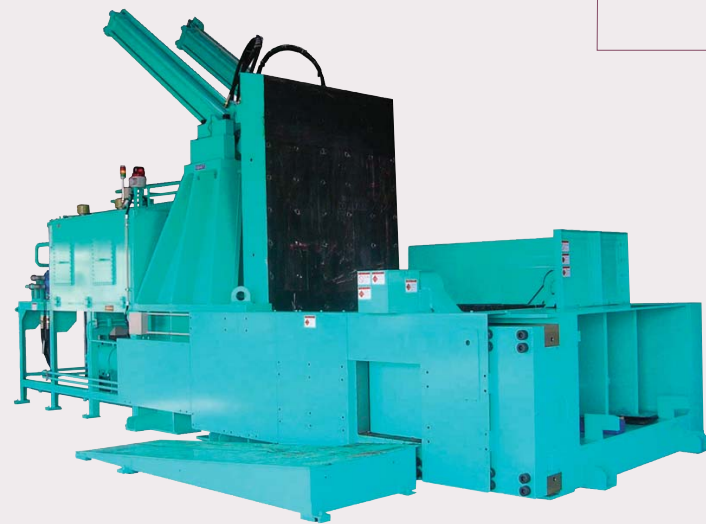
Waste disposal machines

Shredders & volume reduction machines

Hydraulic two-axes shredder

Use: Shredding of large-sized waste (high capacity of shredding)

High strength blades equipped at high torque and low speed shafts ensures efficient shredding of large sized flammable and non-flammable waste, loaded from hopper.



Three-directional press

Use: Compression and volume reduction of large-size iron scrap

After loading large-size iron scrap such as shredded automobiles, a sequential compression process compresses the scrap from top, side and rear automatically into blocks and discharges it from the front.



Two-directional press

Use: Compression and volume reduction of small-size iron scrap such as waste cans

The scrap is loaded from hopper, and compressed into blocks by top and rear cylinders sequentially, then discharged from the front.



Car press

Use: Compression of waste automobiles

Disassembled car body can be loaded as it is, compressed into block by top, side and rear cylinders or top and rear. The block is discharged from the front. Two-directional or three-directional can be selective according to the purpose.

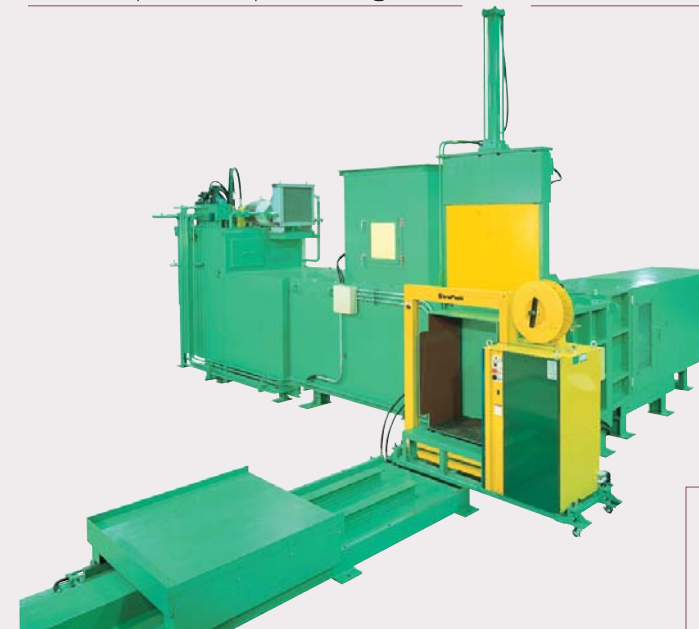
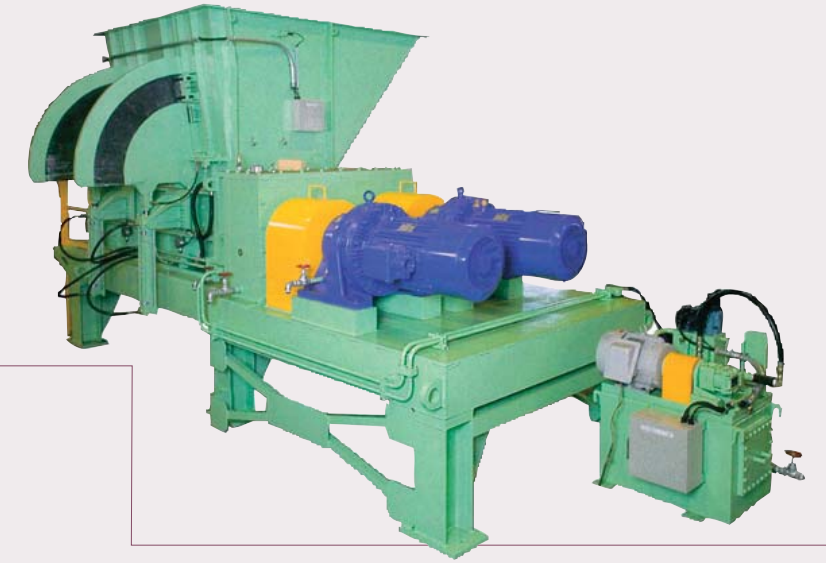
Waste disposal machines

Shredders & volume reduction machines

Electric two-axes shredder

Use: Shredding of large-sized waste (compact type)

High strength blades equipped at high torque and low speed shafts ensures efficient shredding of large sized flammable and non-flammable waste, loaded from hopper. Compared to hydraulic type, it is compact and space-saving shredder.



Waste plastic packing machine

Use: Compression and packing of bulk plastic waste

Low density bulk waste such as plastic waste is compressed into the regulation size from top and side, and automatically packed with PP band.

Waste plastic (PET) bottle packing machine

Use: Compression and packing of waste plastic bottle

A complete automatic packing machine that compresses a certain volume of plastic bottles into the regulation sized block, then packs the block with PP band.



Waste urethane press

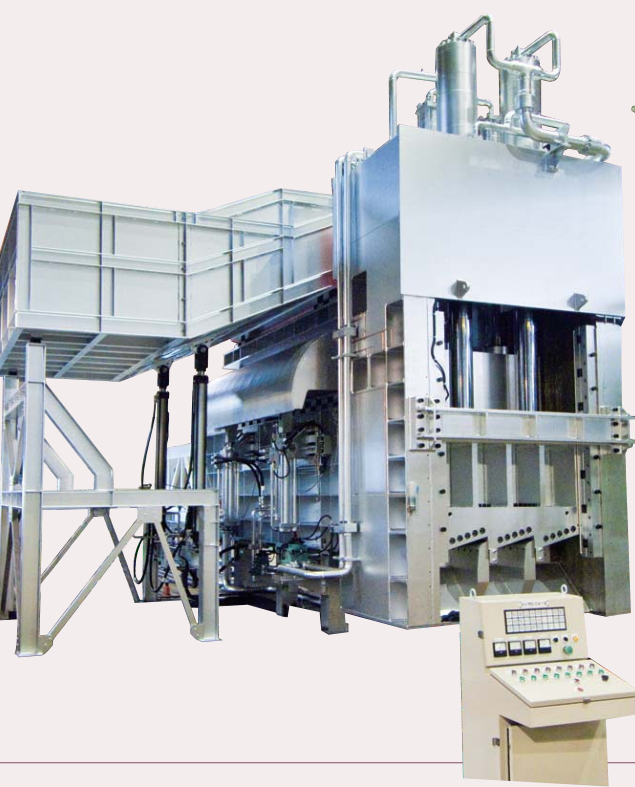
Use: Compression of foamed urethane waste

This press is designed to compress foamed urethane waste that is separated from electric appliance waste and industrial machine waste. Waste volume is reduced at 1/10 with high pressure compression.



Waste disposal machines

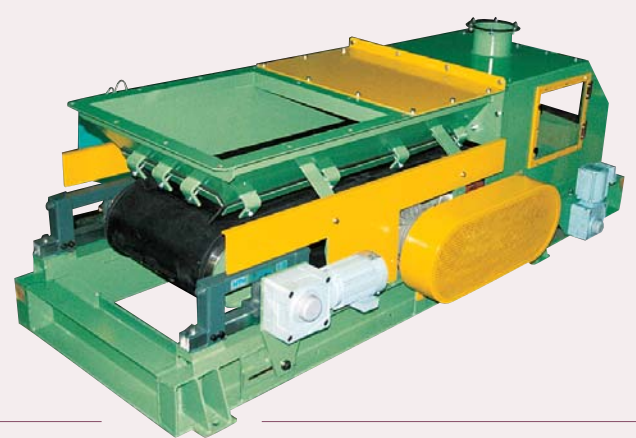
Shredders & sorters



Scrap Press for Oversized Waste Disposal

Use: Cutting of large furniture, 'tatami' mats, wooden materials, carpets, bedding, nets, cordage and FRP products.

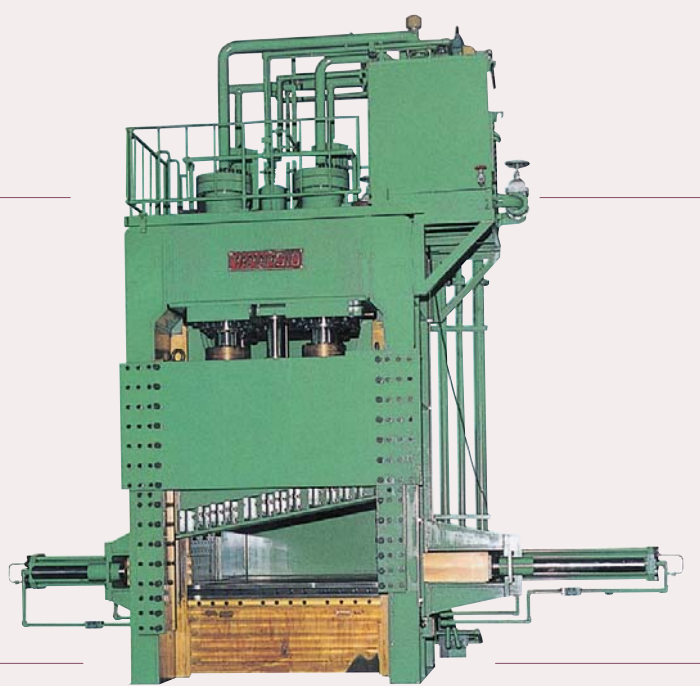
This high-performance machine, designed to scrap large-sized waste, is an integral part of waste disposal plant. The prime compression by hydraulic wing secures stable cutting results.



Aluminum Separator

Use: Sort out an aluminum scraps from mixed metal scraps

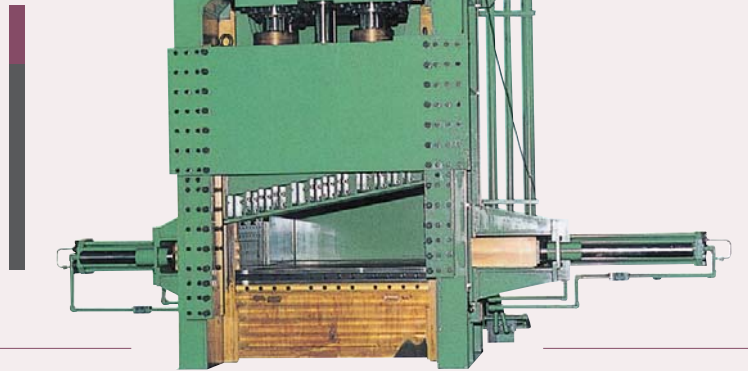
Put the crushed mixed metal scraps into the machine and it will separate iron and aluminum by a magnetic energy of permanent magnet rotating body.



Guillotine Shear

Use: Scrapping of large-sized building materials

Once materials are placed into the feed bin, this machine automatically cuts them to a uniform size, with high rigidity, durability and abrasion resistance, it is the core machine of scrapping process.



Trommel

Use: Classification of cutting grinding waste

Trommel consists of a perforated cylindrical drum. Put the crushed scrap from hopper, the drum will rotate and classify a granularity of various scraps.



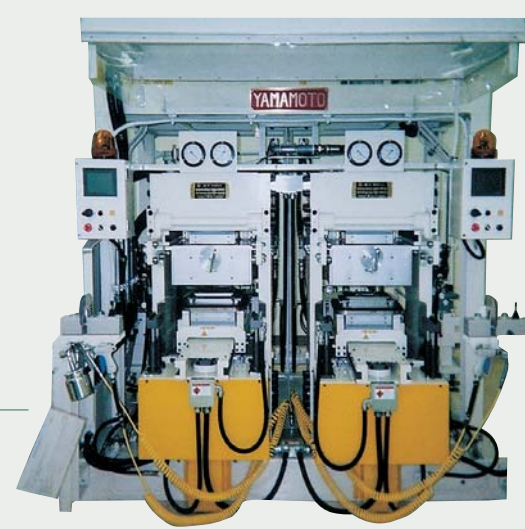
Industrial press machines

Rubber and urethane presses

Vacuum Vulcanizing Press for Rubber

Use: Production of oil seals, medical plugs, O-rings, packing, etc.

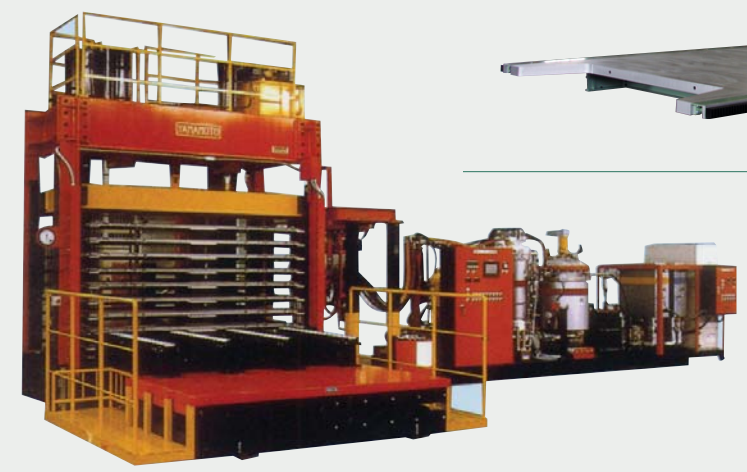
Incorporated our own developed heating and pressing program, every pressing conditions are optimized. Vacuum type operation not only reduces vulcanizing cycle times but also improves production recovery.



Large size rubber molding press

Use: Form a large size rubber product

Form a large size rubber product with the high accuracy. We can manufacture the press machine that the total pressure is more than 5000ton.



Heat insulating panel manufacturing press line

Use: Product of a heat insulating panel and acoustic panel

This heat insulating panel manufacturing line consists of multistage hot press, foaming machine, mixing head traverser, automatic transfer equipment and automatic lifter.

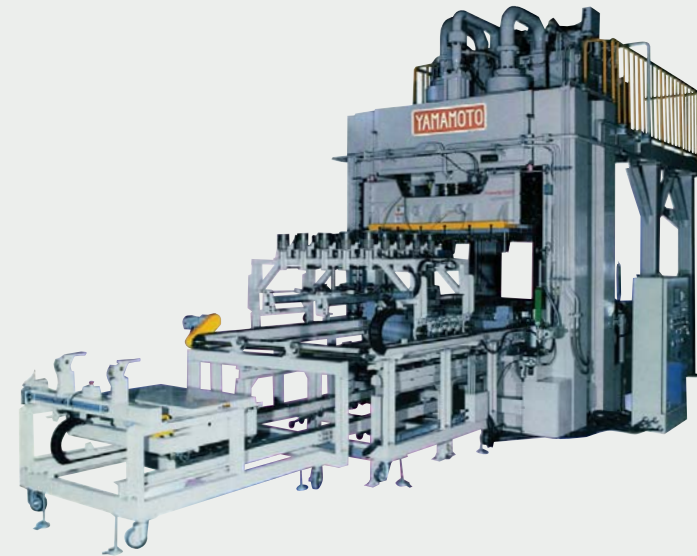
Industrial press machines



Plastic and laminated board presses

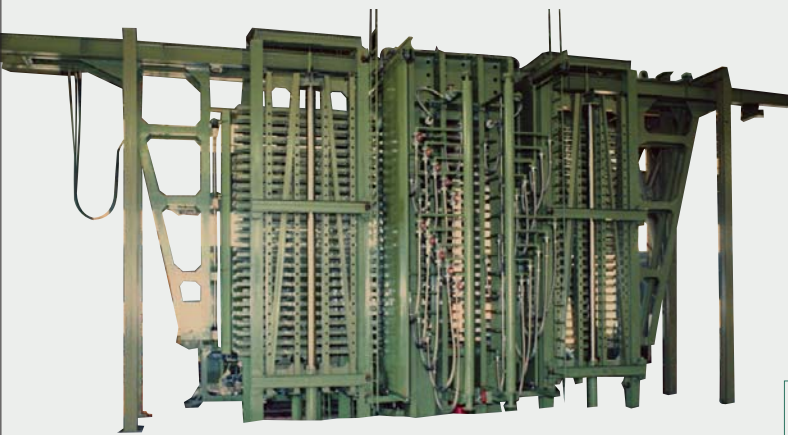
FRP Molding Press

Use:Forming of a prefabricated bath etc.
 The press body and frame are constructed from box section welded steel plates and beams for maximum strength and stability. You can choose some options such as a leveling control system, automatic loader and unloader etc. Apply pressure and heat on SMC and BMC to shape various products.



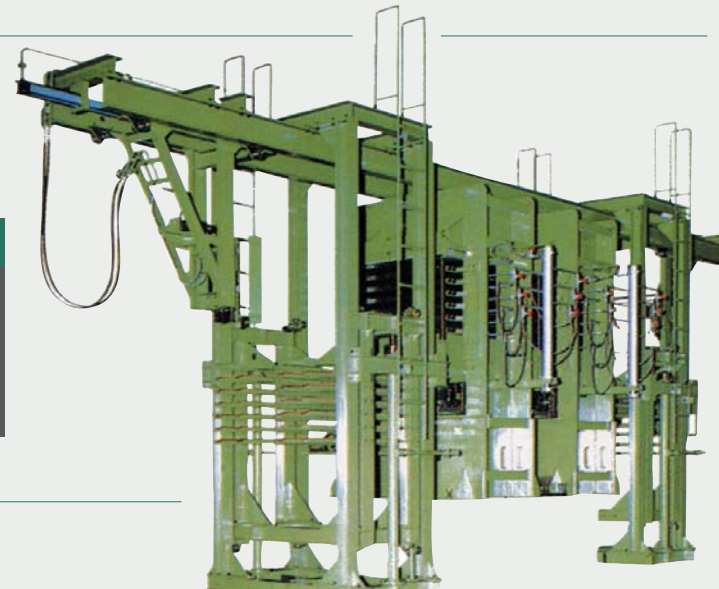
Injection Compression Molding Press

Use:Large size product molding of wood powder polypropylene/recycled plastic
 Even the low melt flow material (e.g. wood powder + PP / recycled plastic) is processed through heating and melting, then a press molds it to large-size products (e.g. palette, concrete shuttering board) by cooling at high-speed.



Fully Automatic Hot/Cold Press for Laminated Plastic board

Use:Laminated plastic board processing
 This system is composed of loader press with vacuum device, unloader and caul plate circulation device. It allows heating and cooling of heat platen, while maintaining pressure.



Multi-Opening Sequential Press for Vinyl Chloride Tile

Use:Vinyl chloride processing
 This is a fully automatic press with a four-step sequential configuration : loader, hot press, cold press and unloader. For products which can lose pressurization in the transition from heating to cooling.

Industrial press machines

Plastic and laminated board presses

Vacuum molding press machine

Use:Forming of printed circuit board, multi-layer laminate material and laminated sheet
 This press produces the high quality molded product without air bubbles under vacuum conditions.



Servo press machine

Use:Production of a metallic panel, door and partition panel
 This press is for composite panel, partition panel production. By servo motor control, the slide table position can be set at 0.1mm unit for uniform panel thickness. Without hydraulic system, it ensures clean work environment, free from oil and noise with easy maintenance.



Hybrid press machine

Use:Product a wide variety of building materials, transport materials, industrial materials and automobile materials
 This hybrid hydraulic press machine combines a servo motor that has an excellent positioning accuracy and a hydraulic cylinder that provide stable pressure. It realizes an energy conservation, high-cycle and low maintenance cost.



Continuous press machine

Use:Product a wide variety of building materials, transportation packing materials and resin products
 This press machine is equipped with steel belt and resin belt etc. You can choose single belt or double belt as usage.



Building material presses

APT Hot Press for Plywood

Use: Plywood

With APT control system, data such as conditions and production are printed out for each pressing cycle. The patented structures of every kind minimize errors and downtime with high productivity.



Top Ram Type-Cold Press

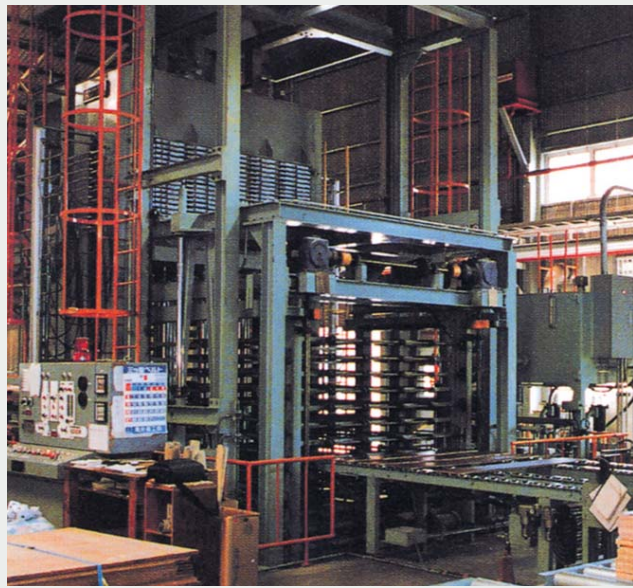
Use: Prepressing and secondary gluing of plywood, plywood composite and other overlaid panel materials

Rigid structure and advanced hydraulic control system ensure high performance on compression. Each component of high stability are employed for simple maintenance.

Press Line for Flooring

Use: Flooring, Plywood flooring, WPC and other materials

The system mass-produces flooring of narrow-width such as 1'X6' in a full automatic operation from in feeding to out-feeding. It can also be adapted to the production of panels in various sizes (option).



Hot Press with Conveyor

Use: Processing of fancy laminated woods

Simply place laminated panels on the in-feeding conveyor stand, this press will automatically handle from arrangement and in to out with high productivity and laborsaving.



Press for large sectional laminated wood

Use: Production of large, straight sectional construction beams

This press consists of spreader, setter, multi-row cold press, insertion and ejection device. This fully automatic large sectional laminated wood press line enable you to press a long narrow material with accuracy and provide high quality and high-production.



Oil-Heated Hot Press

Use: Production of fancy and film-laminated plywood

This hot press equips with an electric oil heater for heating platens. The temperature is controllable in the wide range from room temperature up to approximately 200 degrees with the high accuracy.

Building material presses

Steam Injection Press

Use: Wood material molding and caking

High-speed molding press molds and cakes wood material such as bark and wood powder by the high-speed heating and cooling by means of the steam injection and the vacuum degassing.



Press for Experimental Use

Use: Experimental pressing and testing applications

The fruits of Yamamoto's technological expertise are condensed into this press, designed for the exacting needs of a wide range of tough research and development application to handle all kinds of experiments at high-performance.

